

Item Code:

H 1000A: 2000 users, one master card

H 1000Z: 4000 users, one master card

H 1000AF: 2000 users, one master card, weather-resistant

H 1000ZF: 4000 users, one master card, weather-resistant

Warranty

All the Headen's products are designed for reliable, trouble free operation and is covered by a one year warranty against defects in materials or workmanship. If the damage is or has been caused by accident, hazard, fire, flood, voltage, fluctuation, faulty installation, Acts of God, or any other causes arising or in connection with the misuse, negligence or fault of the customer, will invalidate the warranty.

As the Headen's reader is not a complete access control system but only a part thereof, Headen cannot accept responsibility or liability for any damages whatsoever based on a claim that the reader failed to function correctly.

Due to our policy of continuous improvements Headen reserve the right to change specification without prior notice.

If the product is or has been modify or tampered with or repaired by any other person other than the authorized service centre staff or if the original identification marks, serial number has been removed , defaced or altered on any factory fitted parts, will invalidate the warranty.

Safety Notes

This equipment is designed for dry indoor use only. (Except H1000F)
Do not install the equipment in area with high temperatures or wet and humid area.
No short circuit the output wire.

Specifications

Operating Temperature: -10°C to +45°C
Maximum Humidity: 95% non-condensing
EMC Environment: Residential/Commercial/Light
Industrial or Industrial

Electrical

Operating Voltage: 12VDC
Current Consumption: <100mA

Programming Overview

The Master Programming card (Manager card) is necessary for the programming of new user card.

Caution: Do not misplace the cards or you will not be able to program new card or delete user card.

Default Setting

ON				
OFF	1	2	3	4

DIP SWITCH

- 1) Programming of Master card & Data copy
- 2) Time interval setting
- 3) & 4) Door situation setting for controller & Inductor coil (metal door, nonmetal door)

1) Programming of Master card & Data copy

SETTING	1	2	3	4
ON/OFF	ON	X	X	X

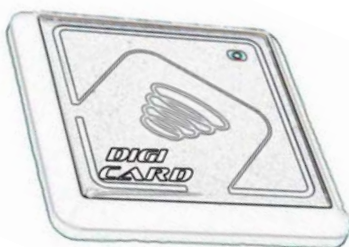
2) Entry time interval setting

SETTING	1	2	3	4
A) ON/OFF (8 SEC)	OFF	ON	X	X
B) ON/OFF (1 SEC)	OFF	OFF	X	X

3) & 4) Door situation setting for controller & External inductor coil

SETTING	1	2	3	4
A) METAL	OFF	X	ON	ON
B) NONMETAL	OFF	X	OFF	OFF

Setup Procedure



→	Power supply	Black -ve
→	Power supply	Red +ve
→	Exit Button	Purple
→	Exit Button	Purple
→	N.O. Lock	Yellow +ve (Power to unlock, electric rim lock, fail secure)
→	N.C. Lock	Blue +ve (power to lock, EM lock, fail safe)
→	COM	Green -ve

How to set Master card:

Set the Dip switch to the ON position accordingly as in Fig. 1.
Apply power to the reader and the buzzer will activate.

Next place the Dip switch 1 to the OFF position and wait for the buzzer to deactivate.
Place a new card near the reader and when it recognized the card, the reader will beep, set Master card successfully.

How to add user card:

Flash the Master Programming card, the reader will beep twice and the LED will illuminate to green color which is the programming mode.

Flash a new user card, the reader will beep once, new card accepted.

If the reader beeps twice, it means this card already programmed before.

Flash the Master Programming card again, the reader will beep once and the LED will illuminate to red color and return to normal mode

You can continue with subsequent cards until all the cards have been programmed.

2) Programming of Entry Time delay

A) When the Dip switch 2 is place to the ON position as shown in Fig. 2, the time interval is 8 seconds. This setting is suitable for EM lock, Electric Drop Bolt.

B) When the Dip switch 2 is place to the OFF position as shown in Fig. 2, the time interval is 1 second. This setting is suitable for Electric Rim Lock.

3) & 4) Door situation setting for controller & External inductor coil

A) When the Dip switch 3 is place to the ON position, the reader is suitable for metal door.

When the Dip switch 3 is place to the OFF position, the reader is suitable for nonmetal door.

B) When the Dip switch 4 is place to the ON position, the inductor coils suitable for metal door.

When the Dip switch 4 is place to the OFF position, the external inductor coil is suitable for nonmetal door.

How to delete user card:

A) By Single deletion:

Flash the Master card twice continuously, the reader will beep twice and the LED will illuminate to red color which is the user card deleting mode.

Flash the user card that is to be deleted, the reader will beep once.

If the reader beeps twice, it means this card already deleted before or unregistered.

To complete, flash the Master card again and the reader will beep once and illuminate to red color and return to normal mode.

B) By Multiple deletions:

Flash the Master card twice continuously, the reader will beep twice and the LED will illuminate to red color which is the user card deleting mode.

Flash the Master card again and hold for more than 5 second, LED will illuminate to orange color, then the reader will beep thrice and the LED will illuminate to red color and all the user data will be deleted.

Usage

A) Under Normal Mode: Valid Card

Flash user card once and the reader will beep once and the LED will illuminate to green color.

B) Under Abnormal Mode: Invalid Card

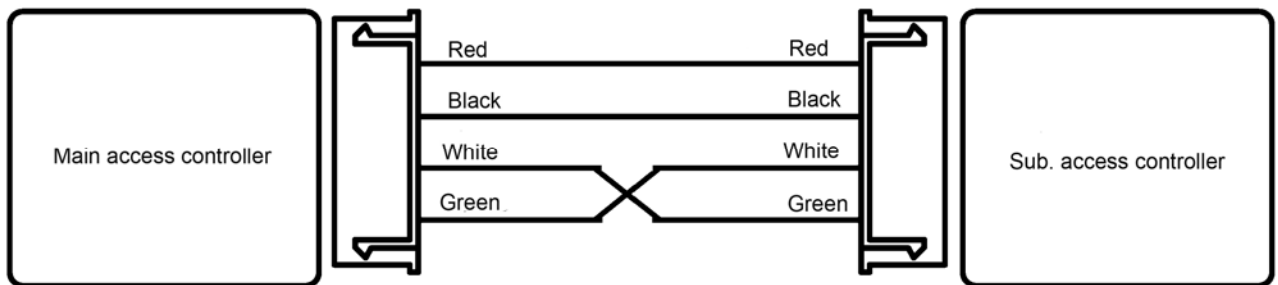
If an invalid/unregistered user card is flashed, the reader will beep twice and the LED will illuminate to red color twice.

Factory Defaults Reset

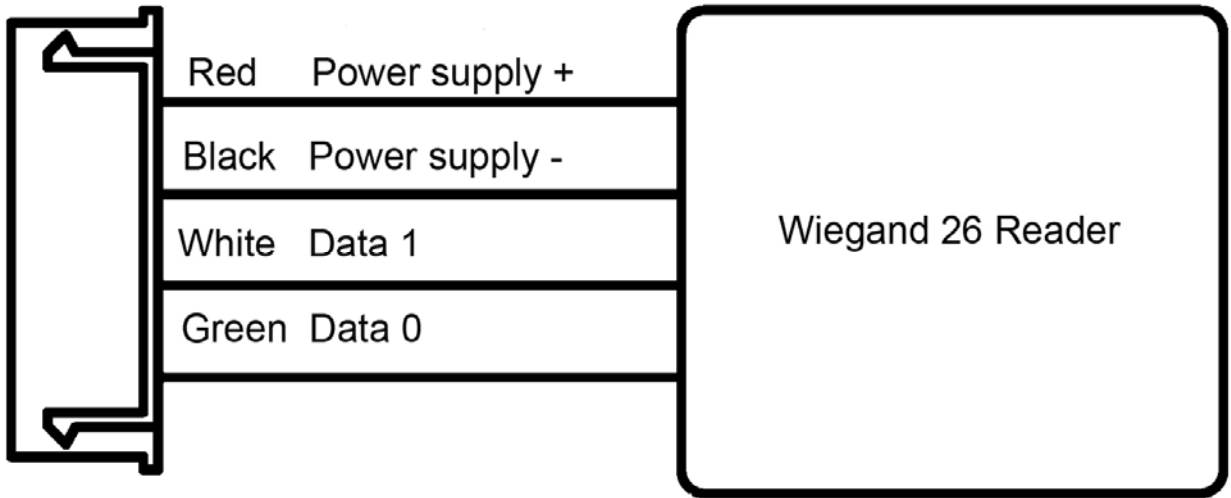
Power up the reader, the led will illuminate to red color, set the Dip switch 1 to the ON position. Disconnect and then reconnect back the power supply, the reader will beep continuous. Set the Dip switch 1 to the OFF position

Data copy from Main access controller to Subordinate access control

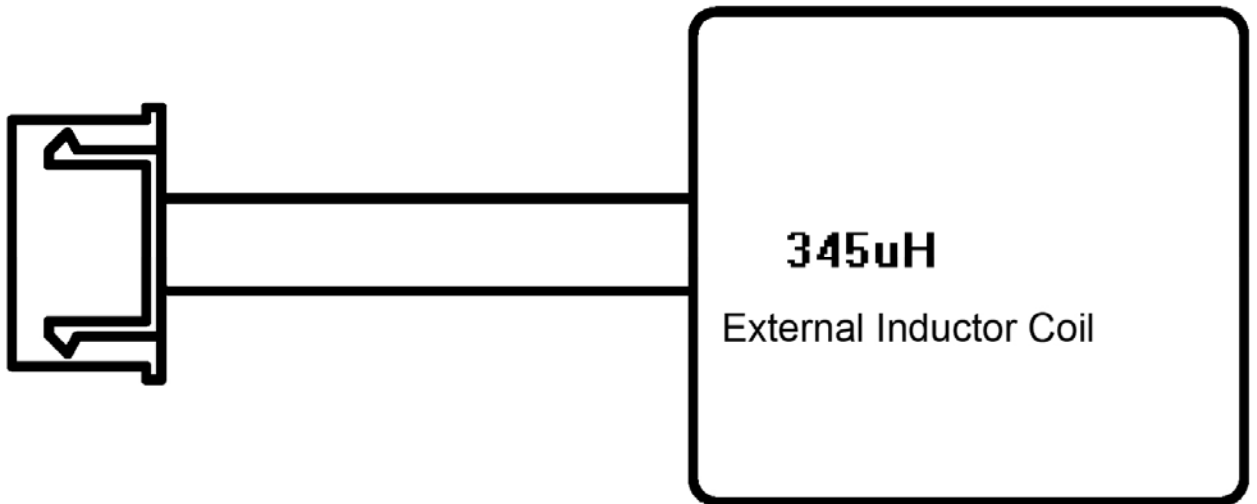
Program all users to Main access control, power off.
Set the Dip switch to the ON position accordingly as in Fig. 1.
Connect the Main reader with Sub. reader as below
Apply the same power supply to both readers and the buzzer will activate when finish copy.
Next power off, place the Dip switch 1 to the OFF position



Connection with external Wiegand 26 Reader (Not accessories, buy separately if necessary)



Connection with external Inductor Coil (Not accessories, buy separately if necessary)



Certificate of Warranty

Serial Number

Product Model Number

Customer's Name

Address

Contact Number

Date of Purchase

Dealer's Stamp

If the product is returned to the Authorized Service Centre after the expiry date of the warranty, the normal service policies shall apply and the customer will be charged accordingly. Transportation, delivery and handling charges incurred to and from the Authorized Service Centre will be borne by the customer.